

# Establishing Beekeeping as a Teaching Tool on College Campuses

BEEcoming a part of the Solution



By Anne LeSenne

# Objectives:

- Identification of common barriers to getting approval for hives on campus
- Examples of successful strategies for getting hives on your campus-start with solitary bees, mason bee homes, external beekeeper to supply a hive on campus
- How to building support across all disciplines-ex. of classes, tours,
- Examples of creative revenue streams to fund apiary-adopt a hive, selling honey, diverse budget, donation, TGIF, grants,
- Key partners to network-Grounds, Horticulture/ Bio, Sustainability, local bee clubs, OSU,
- Provide examples of steps to establish a class on campus
- Time is ripe to propose something to administration
- Key PNW resources

# Common Barriers to getting hives on campus

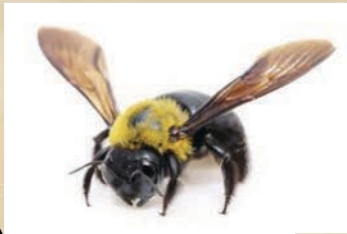
- **Safety** – have an emergency plan identified, trained staff, and possibly epipens on hand
- **Funding** – start up can be private or part of a grant, continuing funding can be as part of a class and proceeds from honey sales
- **Beekeeper** – can be an experienced volunteer from the community, or training a staff member through the OSU Master Beekeeping Program
- **Site** – needs to be protected from winds, afternoon shade, morning sun, close access to fresh water source, possibly fenced, controlled access, easy to maintain, access to plenty of forage from Spring through Fall.
- **Need** – educate campus leadership of need to support pollinators

## Why do we need to support pollinators?

- 75% - 95% of flowering plants need pollination to reproduce. That's 180,000 different plant species and 1200 crops.
- They pollinate plants that bring us at least 1/3 of our food.
- Pollinators are necessary for \$217 billion of our global economy
- Honey bees alone are responsible for \$5.4 billion agriculture in the U.S.
- Last year the U.S. had 33% death in managed hives, which is up from the year before (44%)
- Fight Food Insecurity among students. If you want a successful garden program, you need to support habitat for the pollinators.

# Successful strategies for getting hives on your campus-

- Solitary Bees – carpenter bees, leafcutter bees, mason bees



- Mason Bee houses

Brian Buckner Photography



- External Beekeeper to



## Build support across all disciplines

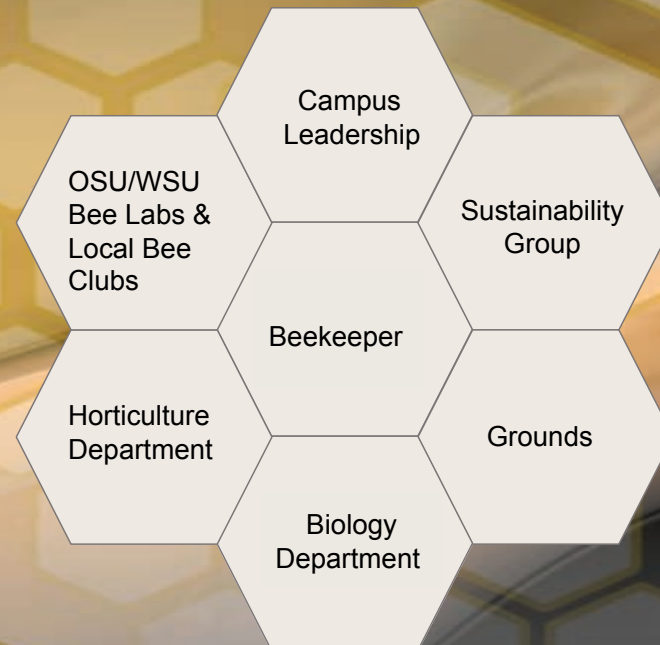
- Sustainability – organic gardening, permaculture
- Biology – entomology, ecology, habitats,
- Horticulture – designing/planning pollinator friendly spaces, insect identification, flowering plants,
- Arboriculture – creating habitat trees,
- Environmental Studies – restoration,
- Lunch ‘n Learn
- Community Education
- Offer tours of the apiary to classes, departments, donors

# Creative revenue streams to fund your apiary

- Adopt a hive
- Private donations
- Honey sales
- Honey Tasting events
- Grants



# Key Campus Partners





## Establish a class on campus

- Identify the best/most interested department to house the class
- Establish your objectives
- Get Class approval
- Find your Beekeeper
- Establish Syllabus & Class Schedule
- Gather supplies
- Run the class Spring and/or Summer

## Key PNW resources:

- OSU Bee lab
- WSU Bee lab
- Xerces society
- Audubon society
- State Beekeepers Association
- Local Beekeeping Clubs
- Online sources for Learning - Perfect Bee course